

2021 NPCR UTAH SUCCESS STORY

Utah Cancer Registry: Morgan M. Millar, PhD; Marjorie E. Carter, MSPH; Sandra L. Edwards MA; Carol Sweeney PhD

Cancer Survivor Survey through a Central Cancer Registry to Evaluate Cancer Control Program Targets for Change

National Program of Cancer Registries SUCCESS STORY

SUMMARY

The 2016 – 2020 Utah Comprehensive Cancer Prevention and Control Plan included several targets for change for cancer survivors. Utah Cancer Registry collaborated with the Utah Comprehensive Cancer Control Program to survey Utah cancer survivors. Results were used to assess needs of this population and to evaluate progress toward targets for change.

CHALLENGE

The Utah Comprehensive Cancer Control Program (Cancer Control Program), in coordination with the Utah Cancer Action Network, developed the 2016 – 2020 Utah Comprehensive Cancer Prevention and Control Plan (State Cancer Plan) as a guide for cancer control efforts.¹ *Survivorship and Quality of Life* was a priority area of focus in this plan. This priority area included nine targets for change addressing the health status, health behaviors, and health care of cancer survivors (Table 1). Most targets for change were aligned to Healthy People 2020 objectives. The State Cancer Plan included an action step of performing a needs assessment for survivors. Whereas the Utah Behavioral Risk Factors Surveillance System (BRFSS) Survey2 collects state-level data about residents' health and health-related behaviors and includes some cancer survivors among respondents, Utah set out to conduct a survey focused exclusively on the needs of recent cancer survivors to fully assess progress on the targets for change.

SOLUTION

The Utah Cancer Registry and the Cancer Control Program collaborated in creating a questionnaire that included items to capture self-reported status on each target for change. Questions from the BRFSS cancer module were included, as well as questions from other standardized instruments. Utah Cancer Registry conducted surveys in 2018, 2019, and 2020. Subjects were population-based samples of cancer survivors diagnosed during 2012-2018. Weighted random sampling was used to enrich for Hispanic survivors and for survivors who were residents of geographic areas with fewer residents having health insurance. Utah Cancer Registry analyzed responses to items pertaining to the targets for change in the State Cancer Plan and prepared a report for the Cancer Control Program. The report was used in evaluation of the 2016 – 2020 State Cancer Plan and to inform goals for the 2021 – 2025 plan.

RESULTS

Survey responses from Utah residents (179 Hispanic and 1,249 non-Hispanic respondents) who were recent cancer survivors were used to assess the status of the targets for change (Table 1). Fewer than 10% of survivors were current people who smoke with the proportion higher among non-white race and Hispanic ethnicity populations and among residents of rural areas (Figure 1). More than nine out of ten survivors reported that their pain was under control, with the proportion increasing across the three years of the survey. One out of five survivors reported no regular physical activity. Most survivors felt their health was good, very good, or excellent and only 7% were dissatisfied with life. Almost 50% of survivors reported a physical, mental, or emotional limitation. Progress was observed for

the functional limitations target, with fewer reporting limitations in the 2020 compared to the 2018 survey year. Fewer than one out of ten survivors had participated in a clinical trial. The proportion reporting trial participation increased with more recent year of diagnosis and was higher among Hispanic survivors (Figure 2). Almost all survivors had received at least some insurance coverage for their cancer treatment. Approximately half of survivors reported having received a cancer survivorship care plan, with the proportion increasing between diagnosis year 2012 and 2018 (Figure 3). The proportion receiving a care plan was lower in rural compared to urban areas but did not differ according to race and ethnicity nor between areas with more or fewer uninsured.

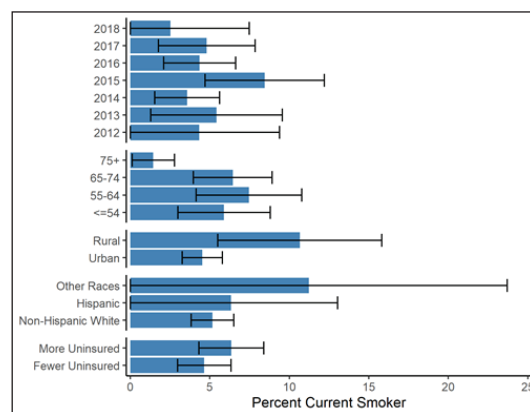


Figure 1. Current smoking among recent cancer survivors, by year of diagnosis, age, residences of urban or rural areas, race and ethnicity, and area-level proportion with health insurance, Utah 2018-2020. Percentages are weighted to account for survey sample design and nonresponse and are age-adjusted to the Utah cancer survivor population.

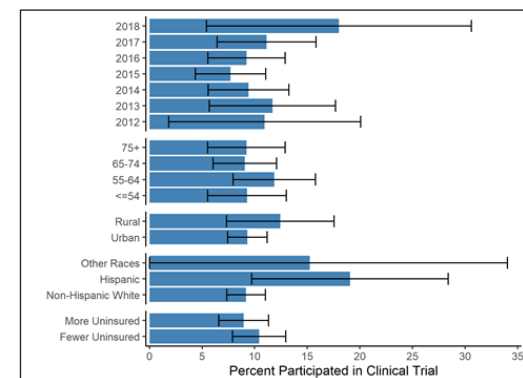


Figure 2. Participation in a clinical trial reported by recent cancer survivors, by year of diagnosis, age, residences of urban or rural areas, race and ethnicity, and area-level proportion with health insurance, Utah 2018-2020. Percentages are weighted to account for survey sample design and nonresponse and are age-adjusted to the Utah cancer survivor population.

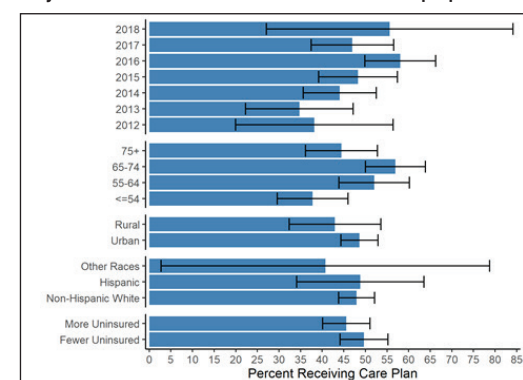


Figure 3. Percent of recent cancer survivors who reported having received a cancer survivorship care plan, by year of diagnosis, age, residences of urban or rural areas, race and ethnicity, and area-level proportion with health insurance, Utah 2018-2020. Percentages are weighted to account for survey sample design and nonresponse and are age-adjusted to the Utah cancer survivor population.

SUSTAINING SUCCESS

By sampling from a central cancer registry, Utah was able to conduct a needs assessment based on a targeted sample of recent cancer survivors with representation of population groups potentially affected by health disparities. Data collection was focused on targets for change stated in the 2016 – 2020 State Cancer Plan. Utah Cancer Registry and the Cancer Control Program will collaborate to evaluate the results to inform future priority initiatives for cancer survivors. The two programs will work together on future surveys to evaluate goals set in the new 2021 – 2025 State Cancer Plan.

REGISTRY CONTACT INFORMATION

801-581-8407

<https://uofuhealth.utah.edu/utah-cancer-registry/>

REFERENCES

1. Utah Cancer Action Network. 2016-2020 Utah Comprehensive Cancer Prevention and Control Plan. 2016.
2. Utah Department of Health. Utah Behavioral Risk Factors Surveillance System Data. Salt Lake City, UT: Office of Public Health Assessment, Utah Department of Health; 2010-2018.



U.S. Department of Health and Human Services
Centers for Disease Control and Prevention